



Input Voltage	120V AC
Wattage	12W
Nominal Lumens	1000lm
CCT	3000K, 2700K
CRI/R9	90+, 62+
Color Fidelity (Rf), Gamut (Rg)	91, 99
Dimming	Phase Dimmable
Dimming Range	100% - <4%
Beam Angles	25°, 40°



**RoHS**



SunLight2® Builder's Edition LED bulbs are designed for applications where High CRI, great dimming performance, and reliability, are integrated in a cost-effective solution. SunLight2® builder's edition meets Energy Star & California Title 20 and 24 & JA8 requirements.

### FEATURES

- **High CRI** - High CRI 90+, R9 62+, TLCI 92 designed to provide superior color accuracy for residential, commercial and retail lighting applications
- **Low Flicker Index** - Providing an ideal and user health focused light source.
- **Energy Efficiency** - Energy efficient equivalent to 120W halogen bulb
- **Protection** - Suitable for use in both open and fully enclosed fixtures.
- **Fully Dimmable** - ELV, TRIAC, dimmable

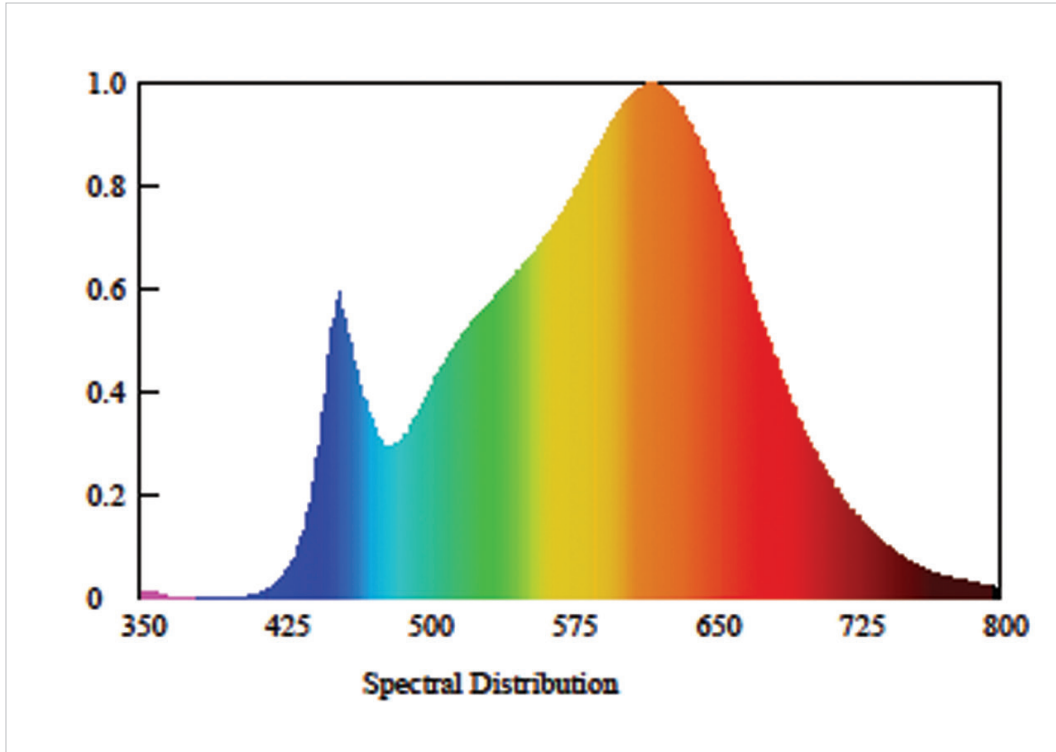
### APPLICATIONS

- Hotels & Hospitality
- Galleries & Museums
- High-End Retail
- Architectural track lighting, pendants, downlights, and other indoor and outdoor applications
- Suitable for damp locations

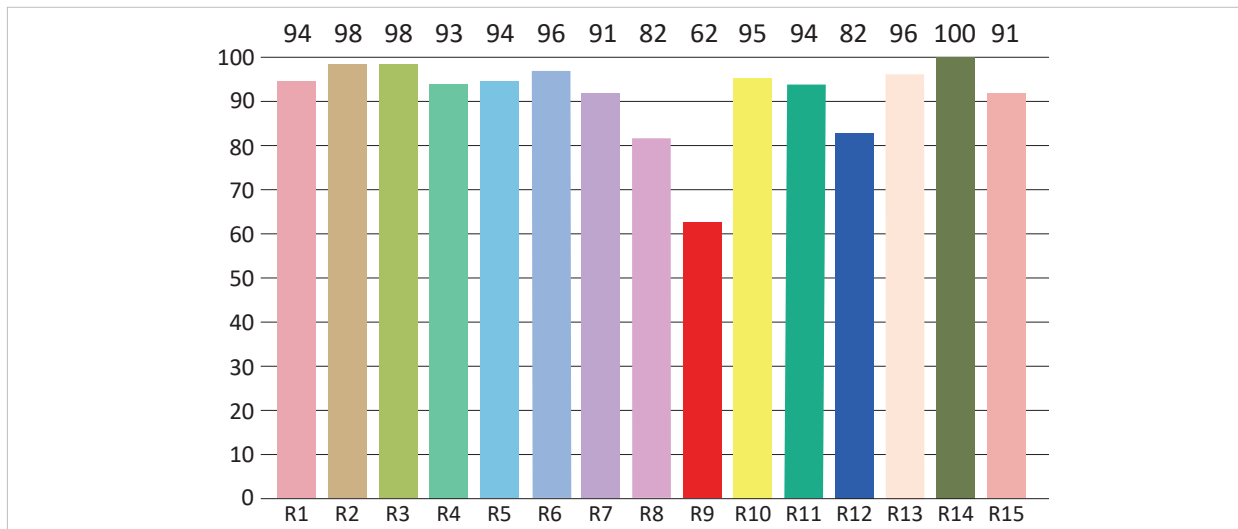
### MODEL SPECIFICATIONS

MODEL NUMBER	WATTS	INPUT VOLTAGE	CCT	LUMENS	BEAM ANGLE	CASE FINISHES
PAR30A12W2700K25W	12W	120VAC	2700K	950lm	25°	White
PAR30A12W2700K40W			2700K	950lm	40°	White
PAR30A12W3000K25W			3000K	1000lm	25°	White
PAR30A12W3000K40W			3000K	1000lm	40°	White

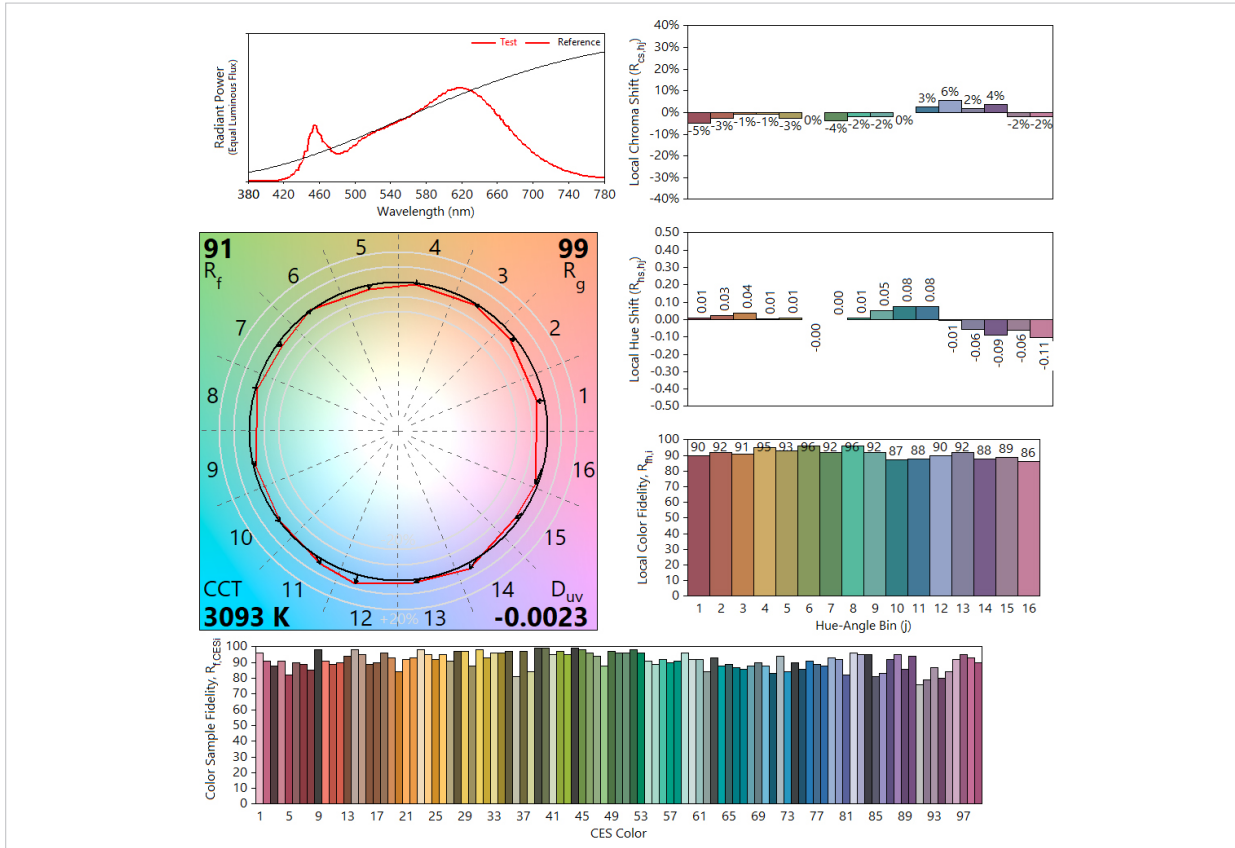
**SPECTRORADIOMETRIC CHART**



**CRI TEST**

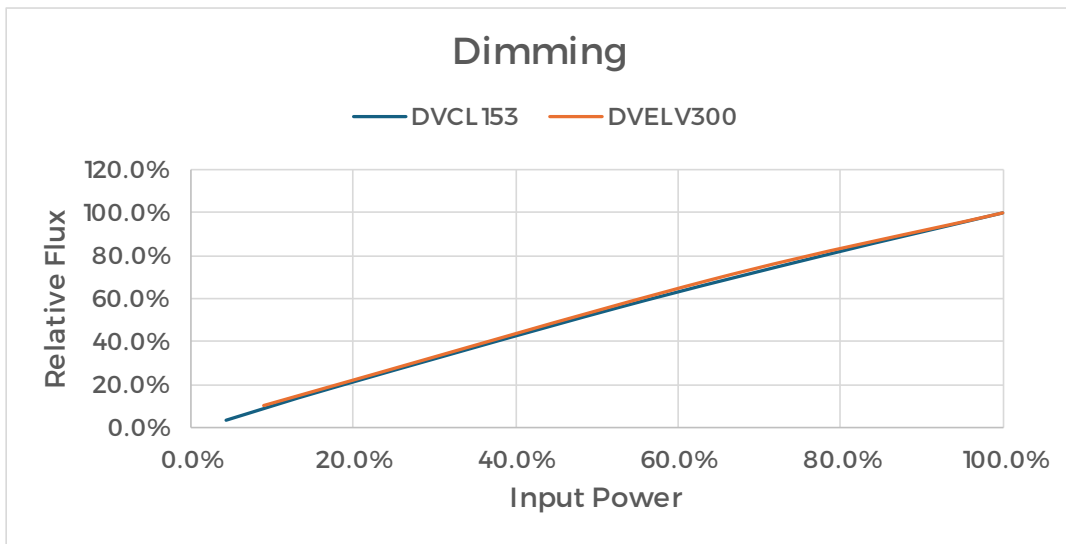


TM30 TEST



\*Data shown based on PAR30A12W3000K25W model

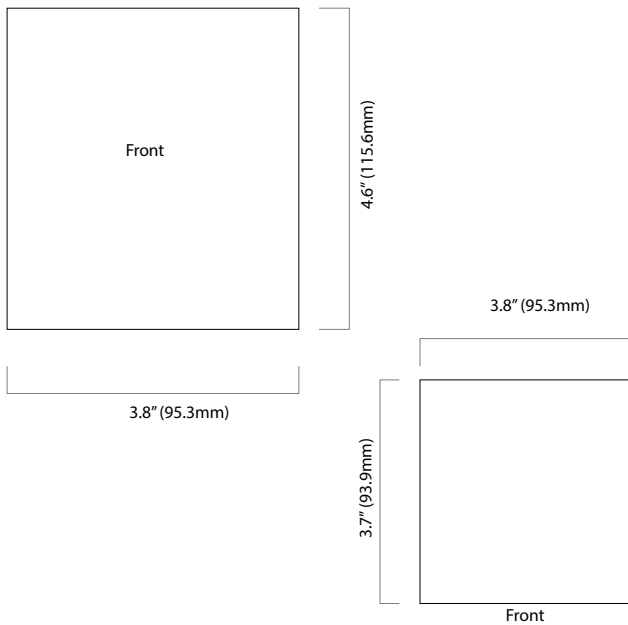
DIMMING CURVE



**MECHANICAL SPECIFICATIONS**

MODEL NUMBER	DIMENSIONS	SHIPPING WEIGHT
PAR30	113 x 92mm	244g

**PACKING**



**PAR30 (Builder's Edition)**

