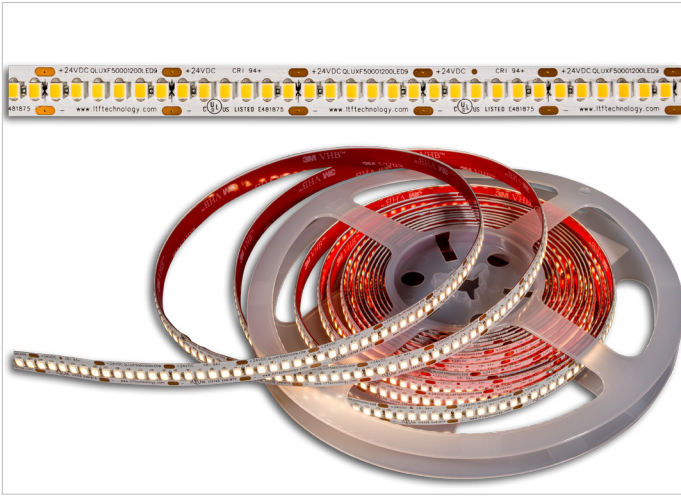


## QLUXF50001200LED SERIES

### Architectural Grade Single CCT LED Tape



<b>CRI / R9</b>	95+/85+
<b>Lumens per foot</b>	~450lm/ft
<b>LEDs per foot</b>	72 LEDs/ft
<b>Cut Lengths</b>	1"(25.4mm)
<b>Watts per foot</b>	7W/ft
<b>Input Voltage</b>	24V DC
<b>Luminous Efficiency</b>	66-75lm/W
<b>Tape Width</b>	0.4"(10mm)



**RoHS**



- CCT option from 2000K to 4000K
- High color rendering index (CRI), Ra max. 90+, and R9 85+
- Title 24 compliant
- High efficacy lumen output (70 lm/W)
- UL Registered

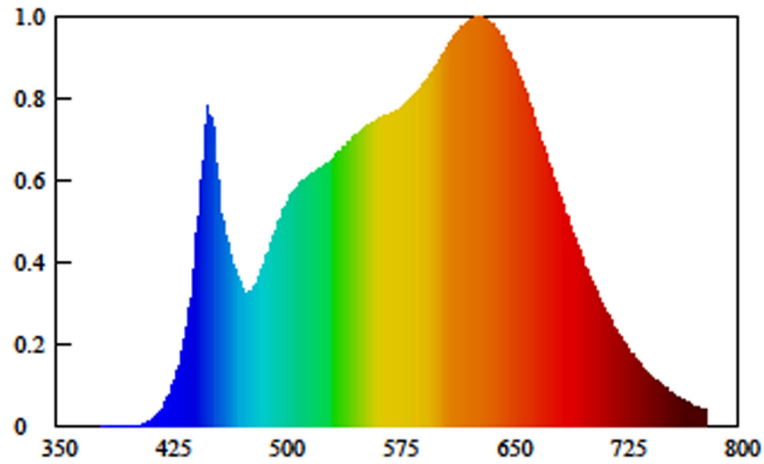
### FEATURES

- LM80 compliant LEDs
- Tight binning less than 3 Mac Adam Ellipses
- Uniform linear light output
- High efficacy LED tape
- 50,000 hour rating

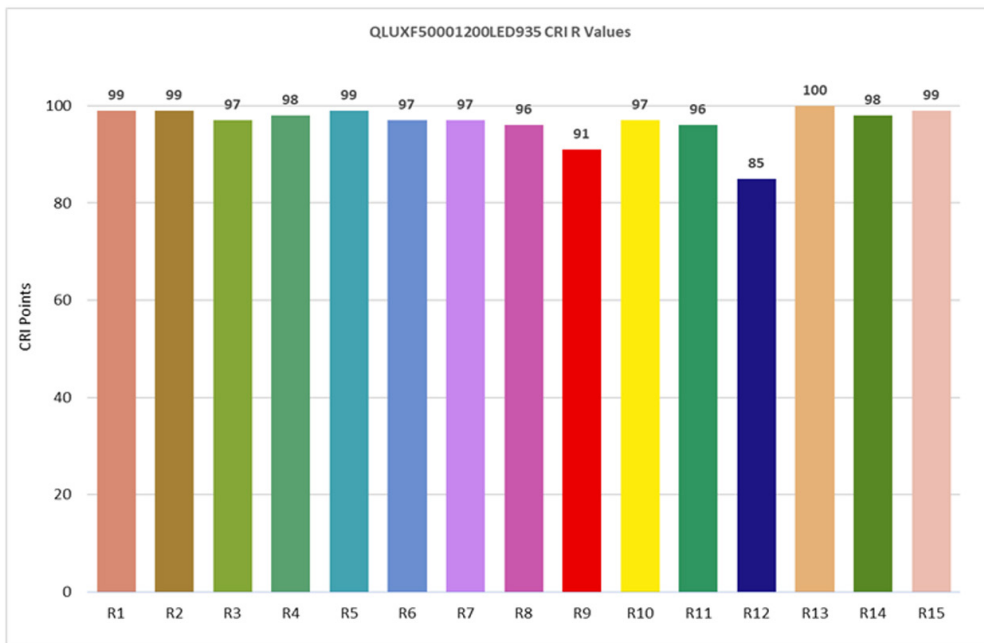
### MODEL SPECIFICATIONS

Model Number	Input Voltage	CCT	lm/m	W/m	lm/W	* Length
QLUXF50001200LED920-*	24V DC	2000K	1100 lm/m	23 W/m	65 lm/W	2=2M, 5=5M, 10=10M
QLUXF50001200LED922-*	24V DC	2200K	1200 lm/m	23 W/m	75 lm/W	
QLUXF50001200LED925-*	24V DC	2500K	1300 lm/m	23 W/m	66 lm/W	
QLUXF50001200LED927-*	24V DC	2700K	1400 lm/m	23 W/m	68 lm/W	
QLUXF50001200LED930-*	24V DC	3000K	1450 lm/m	23 W/m	74 lm/W	
QLUXF50001200LED935-*	24V DC	3500K	1500 lm/m	23 W/m	75 lm/W	
QLUXF50001200LED932-*	24V DC	3200K	1450 lm/m	23 W/m	75 lm/W	
QLUXF50001200LED940-*	24V DC	4000K	1500 lm/m	23 W/m	76 lm/W	

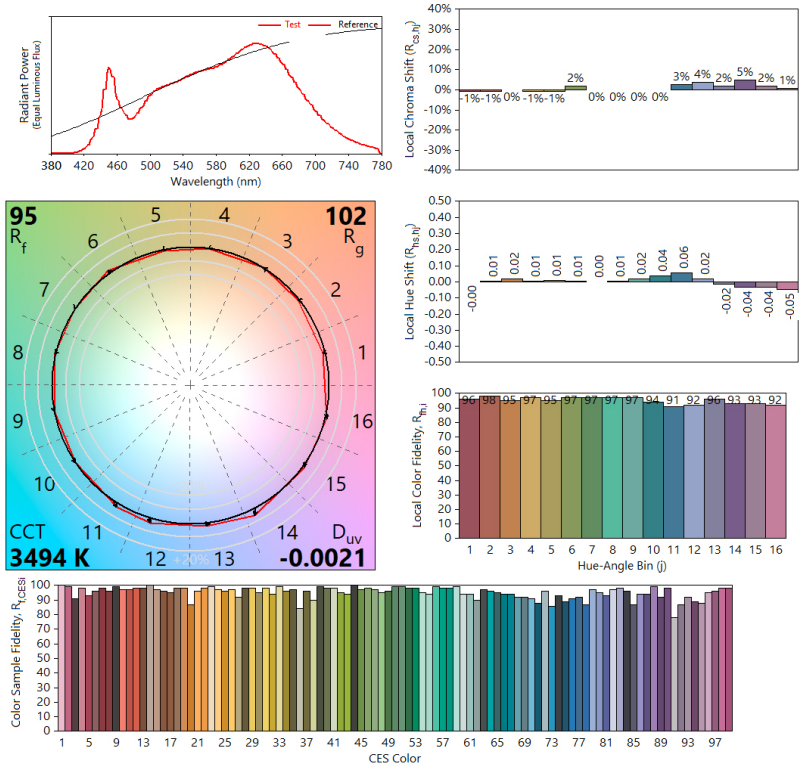
### SPECTRORADIOMETRIC CHART



### CRI CHART



**TM-30 CHART**








Parameter		Rated Value	Unit
Forward Voltage DC	VF	24VDC	V
Forward Current	IF	290	mA/12"
Power	PD	7	W/12"
CRI	Ra	+90	
Luminous Flux	$\Phi$	520lm	Lm (12")
PCB Width	W	10	mm
Copper Thickness	T	3	OZ
Min. Element Size	L	25.4	mm
Min. Buckling Radius	R	$\geq 50$	mm
Angle	$2\theta\frac{1}{2}$	120	deg
Static Electricity	ESD	800	V
Junction Temperature	Tj	115	$^{\circ}$ C
IP Grade	IP	IP20 not waterproof	/
LED Color Temperature	CCT	2200K/2500K/2700K/3000K/3200K/4000K	K
LED Brightness	LM	22lm/LED	LM

### RECOMMENDED LTF DRIVER

MODEL NUMBER	WATTS	OUTPUT VOLTAGE	Tape Length
DS40W24VUD-3002	40W	24V Constant Voltage	2M
DS96W24VBR1UD-3002	96W	24V Constant Voltage	5M
LDS200W24VUD-4002R1	200W	24V Constant Voltage	10M

For tape lengths less than full 5M reel, use appropriate LTF 24V drivers to match tape load power rating under worse scenarios.

### LED TAPE CONNECTORS

MODEL NUMBER	DESCRIPTION	
300-0035	Type "I" Tape to Tape snap connector	
300-0036	Type "I" 2 PIN Tape to Power snap connector with 6" inch wire	
300-0037	Type "I" 2 PIN Tape to Tape snap connector with 6" inch wire	
300-0038	Type "I" Tape to Tape screw connector	
300-0039	Type "L" Tape to Tape screw connector	

### MECHANICAL SPECS

